


---

---

---

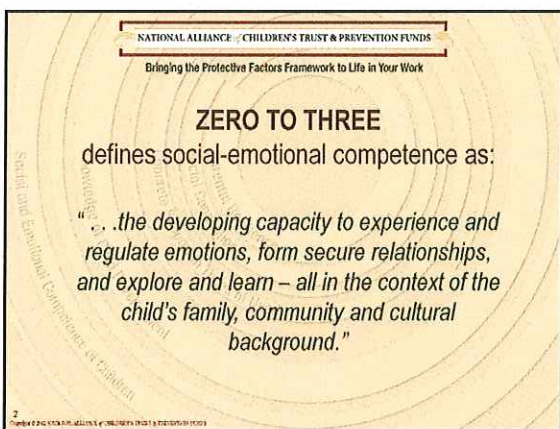
---

---

---

---

---




---

---

---

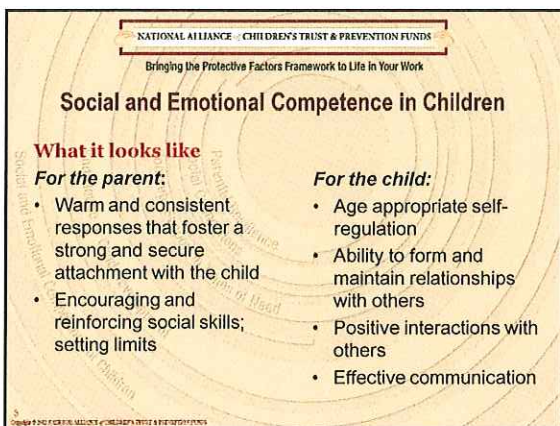
---

---

---

---

---




---

---

---

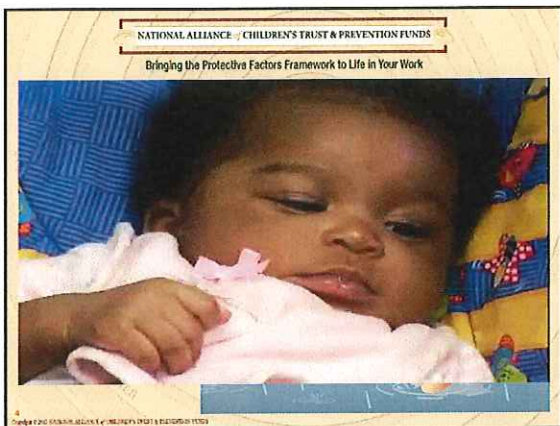
---

---

---

---

---



---

---

---

---

---

---

---

---

NATIONAL ALLIANCE OF CHILDREN'S TRUST & PREVENTION FUNDS  
Bringing the Protective Factors Framework to Life in Your Work

### Why Social & Emotional Competence is Important

Children with a strong foundation in emotional vocabulary:

- tolerate frustration better
- get into fewer fights
- engage in less destructive behavior
- are healthier
- are less lonely
- are less impulsive
- are more focused
- have greater academic achievement

(Center for the Social Emotional Foundation for Early Learning)

5

---

---

---

---

---

---

---

---

NATIONAL ALLIANCE OF CHILDREN'S TRUST & PREVENTION FUNDS  
Bringing the Protective Factors Framework to Life in Your Work

### Everyday Actions to Support Social and Emotional Competence in Children

- Help parents foster their child's social emotional development
- Model nurturing care to children
- Include children's social and emotional development activities in programming
- Help children develop a positive cultural identity and interact in a diverse society
- Respond proactively when social or emotional development needs extra support - EMPATHY

6

---

---

---

---

---


---

---

---

NATIONAL ALLIANCE OF CHILDREN'S TRUST & PREVENTION FUNDS  
Bringing the Protective Factors Framework to Life in Your Work

### Shark Music



Knowledge of Child  
Social and Emotional Competence of Children

7  
Copyright © 2012, National Alliance of Children's Trust & Prevention Funds

---

---

---

---

---

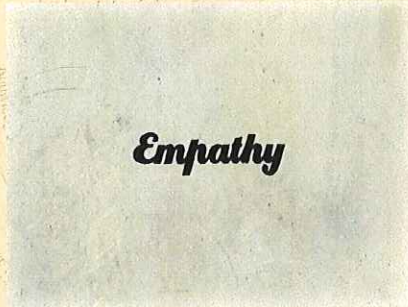
---

---

---

NATIONAL ALLIANCE OF CHILDREN'S TRUST & PREVENTION FUNDS  
Bringing the Protective Factors Framework to Life in Your Work

### Empathy



Knowledge of Child  
Social and Emotional Competence of Children

8  
Copyright © 2012, National Alliance of Children's Trust & Prevention Funds

---

---

---

---

---


---

---

---

NATIONAL ALLIANCE OF CHILDREN'S TRUST & PREVENTION FUNDS  
Bringing the Protective Factors Framework to Life in Your Work

### Children's Emotional Skills to Build



Knowledge of Child  
Social and Emotional Competence of Children

9  
Copyright © 2012, National Alliance of Children's Trust & Prevention Funds

---

---

---

---

---

---

---

---

