

Substance Abuse Treatment & Engaging Families

Gloria Cruz-Bernal, MSW, MPA
Maricopa County Juvenile Court - Family Treatment (FTC)
And
Missy Longe, MC LPC LISAC - Terros Families First

Objectives:

1. Program overview & qualifications.
2. Identify techniques for engagement.
3. FTC and Families First Collaboration.

Families First Background

- ▶ AFF - (F.I.R.S.T. stands for Families in Recovery Succeeding Together) is jointly administered by Department of Child Safety and the Department of Health Services. The two departments are required to coordinate the provision of services to eligible participants.

Vision Statement and Guiding Principles

The vision of the Substance Abuse Treatment Fund is to build a family centered service delivery system, which promotes family independence, stability, self-sufficiency, and recovery from substance abuse, assures child safety and supports permanency for children.

Eligibility

The program offers a continuum of community based substance abuse services to either:

- ▶ A parent, guardian or custodian of a child who is named in a report to DCS as a victim of abuse or neglect and whose substance abuse is a significant barrier to maintaining or reunifying the family.
- ▶ A person whose substance abuse is a significant barrier to maintaining or obtaining employment and is a recipient of TANF.

Overview

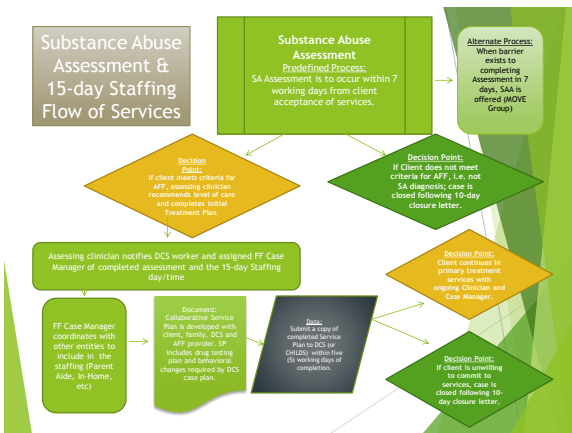
- ▶ There are 3 AFF contracts and 5 regions statewide.
- ▶ Since 2/1/13, Terros holds the FF contract for the following 3 regions:
 - ▶ Central (East Maricopa County and Pinal County)
 - ▶ Southwest (West Maricopa County, La Paz County, Yuma County)
 - ▶ Pima County

Terros Families FIRST's focus

To assist parents to achieve a stage in their recovery that will allow them to safely parent their children.

Substance Abuse Awareness

- ▶ This is a program designed for clients whose assessments will not occur for at least a week and also for pre-contemplative clients that refuse services at assessment.
- ▶ It is an open ended weekly groups or individual sessions
- ▶ It is to be used for a maximum of 30 days



Cradle to Crayons

Our mission is to achieve integrated service delivery and expedited permanency for infants, toddlers, and their families

MARICOPA COUNTY | JUVENILE COURT
Cradle to Crayons Child Welfare Center

West Site: 3443 W. Durango St | Phoenix, AZ 85009 | Phone: 602.506.5094 | Fax: 602.506.5098
East Site: 1349 S. Lewis St | Mesa, AZ 85210 | Phone: 602.506.5094 | Fax: 602.506.5098

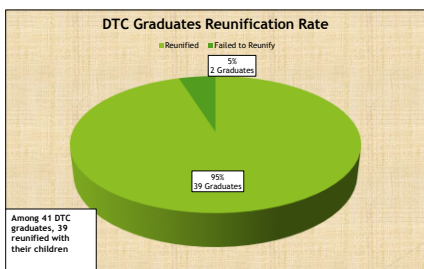
Family Treatment Court

C2C Clinical Services	Collaboration	Extras
<ul style="list-style-type: none"> Trauma Therapy Parent/Child Psychotherapy Family Time Coaching Community Resource Coordination 	<ul style="list-style-type: none"> Terros Liaison Recovery Coach Department of Child Safety 	<ul style="list-style-type: none"> Judicial leadership Up-to-date reporting Preparedness Self-advocacy Positive reinforcements Accountability

Family Treatment Court

- ▶ Eligibility
 - ▶ Open dependency case
 - ▶ Parental substance abuse
 - ▶ Enroll within the first six months of petition filed
 - ▶ Case plan is reunification
- ▶ Participation Requirements
 - ▶ Observe a FTC hearing
 - ▶ Attend substance abuse treatment groups
 - ▶ Call drug screen provider daily
 - ▶ Complete all required drug screens

FTC Participant Outcomes



Co-Location with DCS

Terros staff is co-located in 10 DCS sites in Maricopa County, 1 office in Pinal County and 1 office in Yuma County.

They assist in providing substance abuse expertise at TDM meetings.

Improved coordination and communication.

Forum to educate child welfare staff on recovery and on addiction treatment.

Forum to educate provider staff on the philosophy and responsibilities of the child welfare system.

Allows for ongoing coordinated assessment of risk for child welfare families

Departments of the AFF program

- ▶ Referral
- ▶ Pre-Assessment/Outreach Services
- ▶ Case management
- ▶ Recovery Coach
- ▶ Therapeutic Interventions
 - ▶ Substance Abuse Awareness
 - ▶ Assessment
 - ▶ Treatment Groups (SOP, IOP, RTC)
 - ▶ Recovery Maintenance

Referral Department

- ▶ Receives all referrals from DCS and enters information into Claimtrak.
- ▶ Notifies the DCS case manager within one hour of receipt of the referral that it has been received and will request any missing or further information.
- ▶ Notify the Outreach Department of the Referral.

Outreach

- ▶ The goal of outreach is to locate, engage and motivate clients to accept services. Outreach staff assist participants in scheduling the appointment for an assessment and when necessary will arrange transportation for the appointment.
- ▶ Attempt to contact the client within 24 hours of receipt of referral.
- ▶ Home visits are made if phone contact is unsuccessful.
- ▶ Minimum of 3 outreach attempts within 5 working days.
- ▶ Close coordination with DCS.

Assessment

- ▶ Services are available to clients within 7 days of engagement.
- ▶ Available evenings, weekends and in the client's home.
- ▶ The assessment is the same Comprehensive Assessment that is provided by the RBHA and is designed to determine the level of care that is most beneficial to the client.

15 Day Service Plan

- ▶ Within 15 calendar days of assessment completion, a meeting (in person or via phone) is held with the client, family members, DCS worker, provider, and other agencies providing services to the client.
- ▶ The integrated service plan incorporates the behavioral changes required by DCS to achieve a common service plan goal.

Treatment Options - Levels of Care

- ▶ Outpatient Services - This level of care consists of a minimum of 3 hours of substance abuse treatment per week. Treatment shall include a combination of individual, group, family and case management services.
- ▶ Intensive Outpatient - This level of care consists of a minimum of 8 hours of substance abuse treatment per week. Treatment shall include a combination of individual, group, family and case management services.
- ▶ Residential Treatment - This level of care is assigned to clients who have not been successful with outpatient treatment services.

Case Coordination & Auxiliary Services

All clients are assigned a case manager who is responsible for engaging the client, addressing treatment barriers, and coordinating with community agencies. This includes services such as: re-engaging clients who are not consistently attending treatment services, conducting home visits, attending case staffing meetings, court appearances, coordinating supportive services, monthly review of the case plan, drug screens, auxiliary groups, etc.

Concrete Support Services

These include transportation to and from treatment services, utilities or housing assistance, car repair, food boxes, clothing, etc.

There is a limit per client set by the AFF scope of work.

Recovery Coaches

- ▶ Engage clients into treatment
- ▶ Encourage clients to remain in treatment
- ▶ Help clients Navigate the child welfare system
- ▶ Guide clients through the process of recovery.

Random Drug Testing

Drug testing requirements

- ▶ 2 x per week for the first 60 days
- ▶ 2 x a per month from 61-120 days
- ▶ 1 x per month after 120 days

- ▶ Changes in drug testing are based on therapeutic needs.
- ▶ At this time all clients receiving services at Terros clinics are set up in the PSI system and are required to call in daily to determine if they are required to submit to testing each day.
- ▶ 10-Panel Urine Drug Screen for: Alcohol, Amphetamines, Barbiturates, Benzodiazepines, Cocaine, Marijuana, Methadone, Opiates, Phencyclidine and Propoxyphene.



Techniques for Engaging Families

1. Incorporate Parenting Models into group work.
2. Educate

Techniques for Engaging Families

Educate - Traditional Parenting Roles

- ▶ **Permissive:** sets no consistent guidelines; uses "OK?" at the end of every request; does a lot whining.
- ▶ **My Way or the Highway:** children are expected to be obedient, follow strict rules established by the parents, and "do what they are told to do, when they are told to do it because the parents said so!"
- ▶ **Empathic-Caring:** parents help children learn to be responsible, make good choices, have clear expectations and involve children in making the and following the rules; gets their own needs met.
- ▶ **Abusive and Neglecting:** lacks an empathic response to children's needs; uses violence or the threat of violence; oppresses children's power;

Techniques for Engaging Families

- ▶ We are born with billions of cells that form cellular networks through neurotransmitters that need to be activated.
- ▶ At birth, the baby's brain is 25% - 30% of it's adult size and only 20% to 30% functional
- ▶ Interactions with other adults will stimulate the neurological connections and form networks.

Techniques for Engaging Families

- ▶ The brain will normalize repeated experiences creating healthy or diseased networks and pathways.
- ▶ Behavior is the expression of repeated experiences - neurological pathways.
- ▶ Human beings are born with the biological predisposition to form and sustain long term positive nurturing relationships.

Inappropriate Expectations

Beginning very early in the infant's life, abusive parents tend to inaccurately perceive the skills and abilities of their children.

Effects:

- Low regard for self (concept, esteem, worth)
- Feelings of failure
- Cannot please others
- Angry and anxious attachments

Collaboration